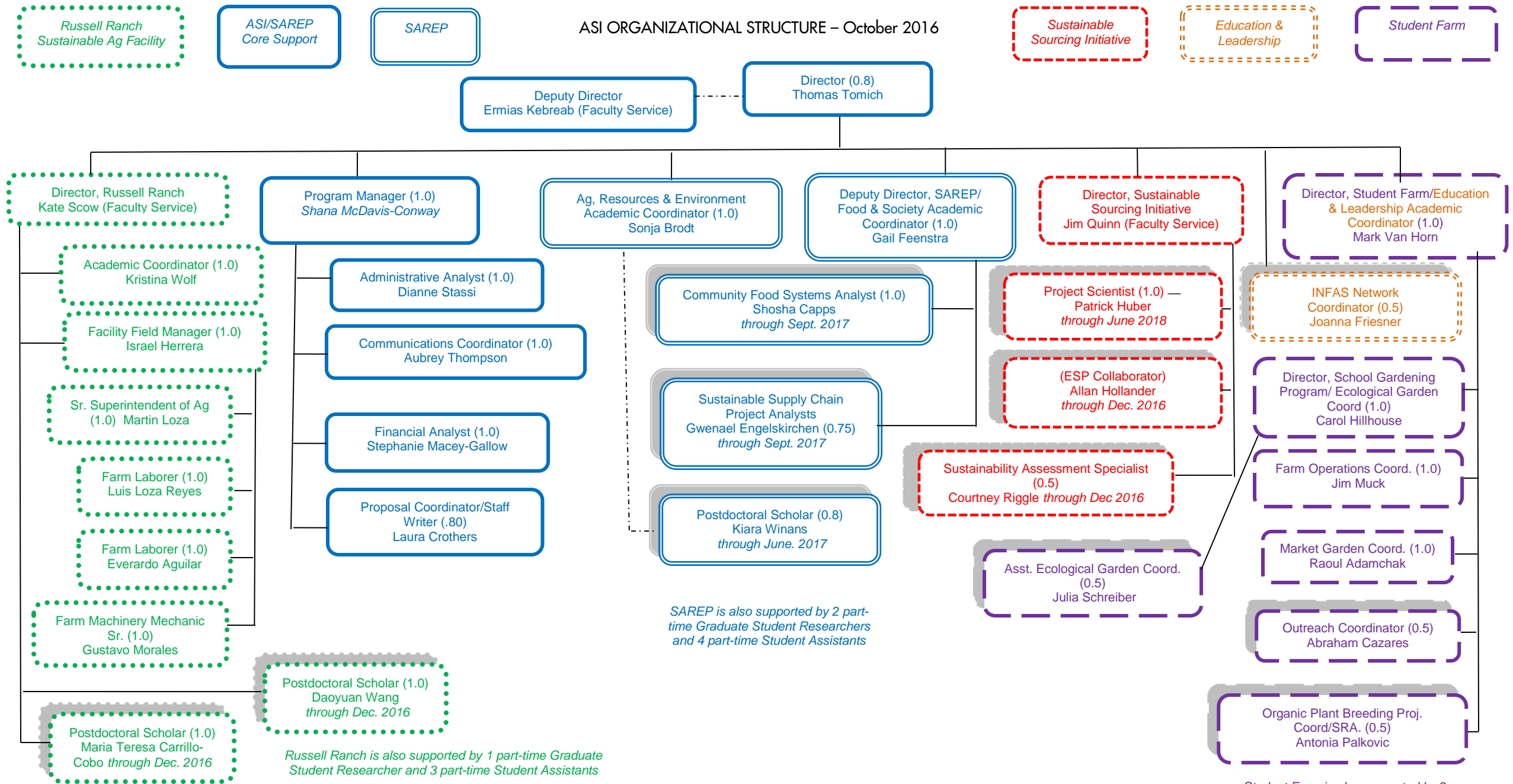


ASI ORGANIZATIONAL STRUCTURE – October 2016



* Shaded box indicates a position funded through grants or endowment funds.
- - - Broken line indicates advisory relationship

The Education and Leadership thematic area is supported by ASI Affiliated Faculty Service as chairs, co-chairs, and faculty advisors for the International Ag Development Graduate Group, the Agricultural Ecology Area of Emphasis of the Ecology Graduate Group, and the Sustainable Agriculture & Food Systems Undergraduate Major. The Sustainable Agriculture & Food Systems Major is also supported by 3 part-time Teaching Assistants and 2 part-time Student Assistants.

Student Farm is also supported by 2 part-time Graduate Student Researchers, 1 UC Global Food Initiative Fellow and 12 part-time Student Assistants