

Nitrogen Management Planning

Where Did It Go? When Did It Get There?

Overview

- New Irrigated Lands Grower Requirements
- Nitrate Studies
- Grower Reporting Requirements
- Management Practice Effectiveness Program

Expanded Focus/New Requirements

- New Waste Discharge Requirements (WDR) and Monitoring Reporting Program (MRP) have groundwater quality component
- New grower and Coalition reporting requirements
- Identify areas where groundwater quality is impacted by developing a Groundwater Quality Assessment Report
- Trend Monitoring - baseline
- Monitoring/Management Practices Effectiveness Program

New Reporting Requirements of Growers

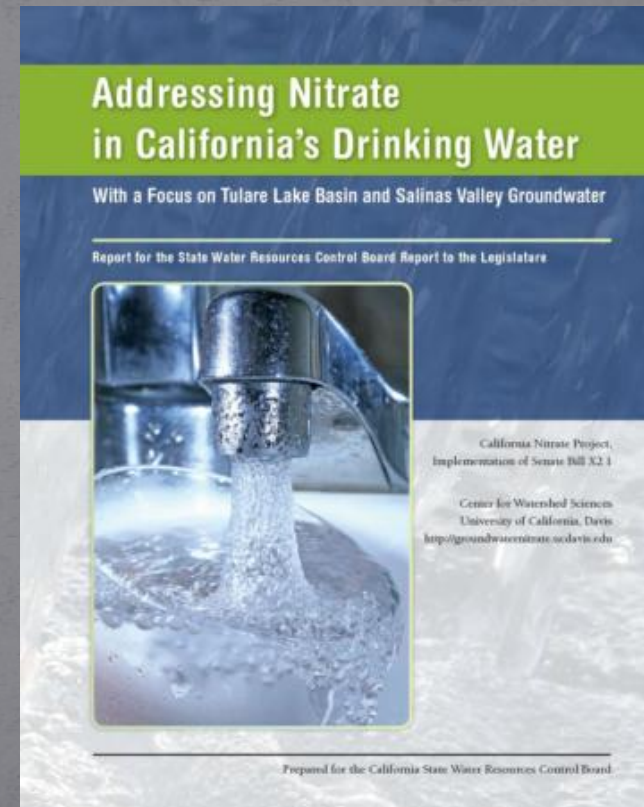
- Three Types of Reports
 - Farm Evaluation –
 - Nitrogen Management – CDFA and State Board Expert Panel
 - Nitrogen Management Summary Report
 - Sediment and Erosion Control Practices

Focus of Nitrate Discussions

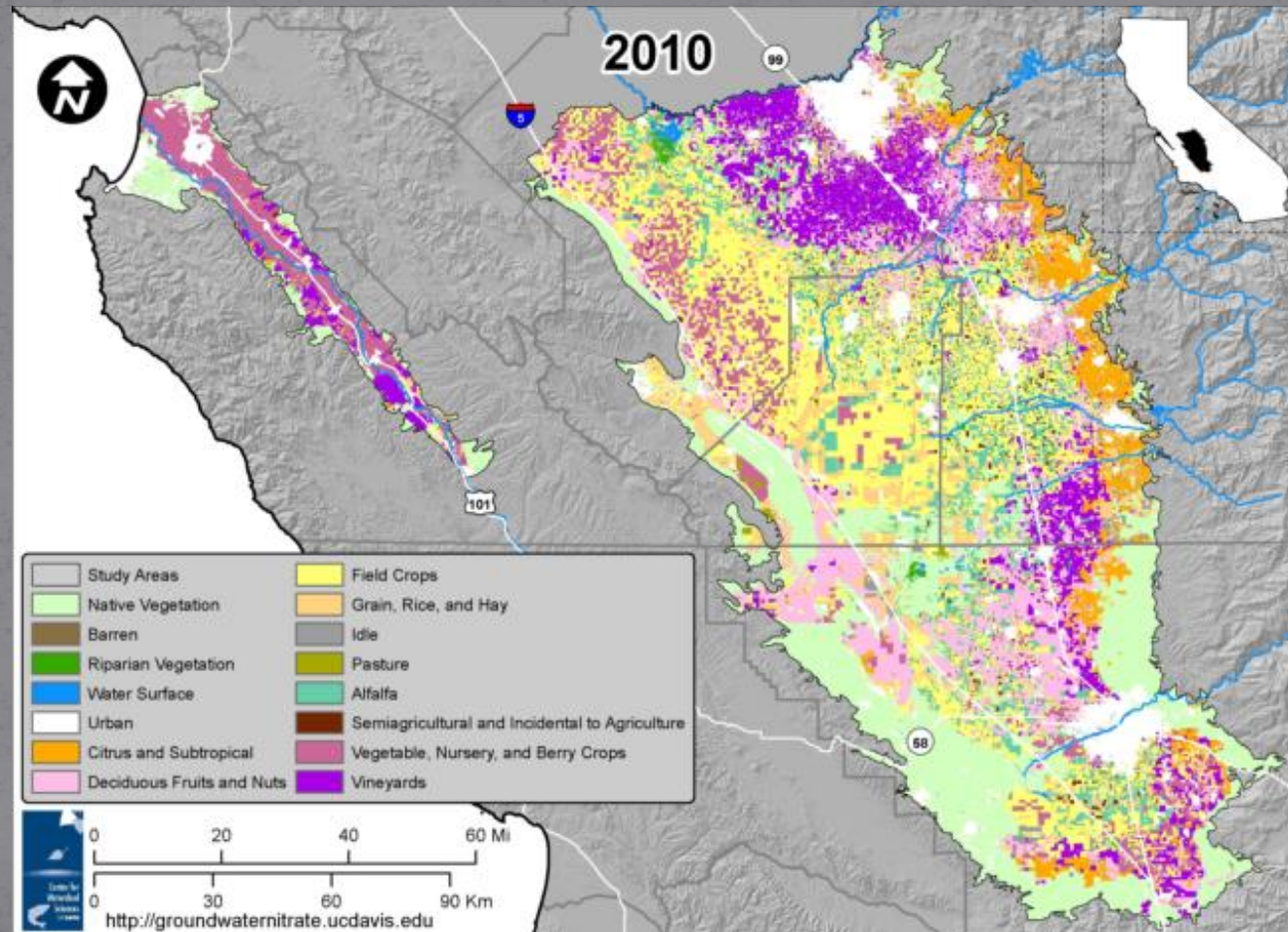
- CV SALTS Basin Plan Amendment Process
- SB X 2 1 UC Davis Study of Tulare Lake and Salinas Valley
- State Water Resources Control Board Recommendations to the Legislature
 - CDFA Task Force
 - State Water Board Expert Panel
- State Water Board's Groundwater Workplan Concept Paper
- Legislature – Funding source to provide Drinking Water to Disadvantaged Communities

Focus on Groundwater Quality

- SWRCB Recommendations to Legislature on nitrate in groundwater for the Tulare Lake Basin and Salinas Valley (Feb 2013).



UC Davis Nitrate Study



Nitrogen Management Plan

- The NMP has two purposes
 - Planning
 - Documenting

Management Practice Effectiveness Program

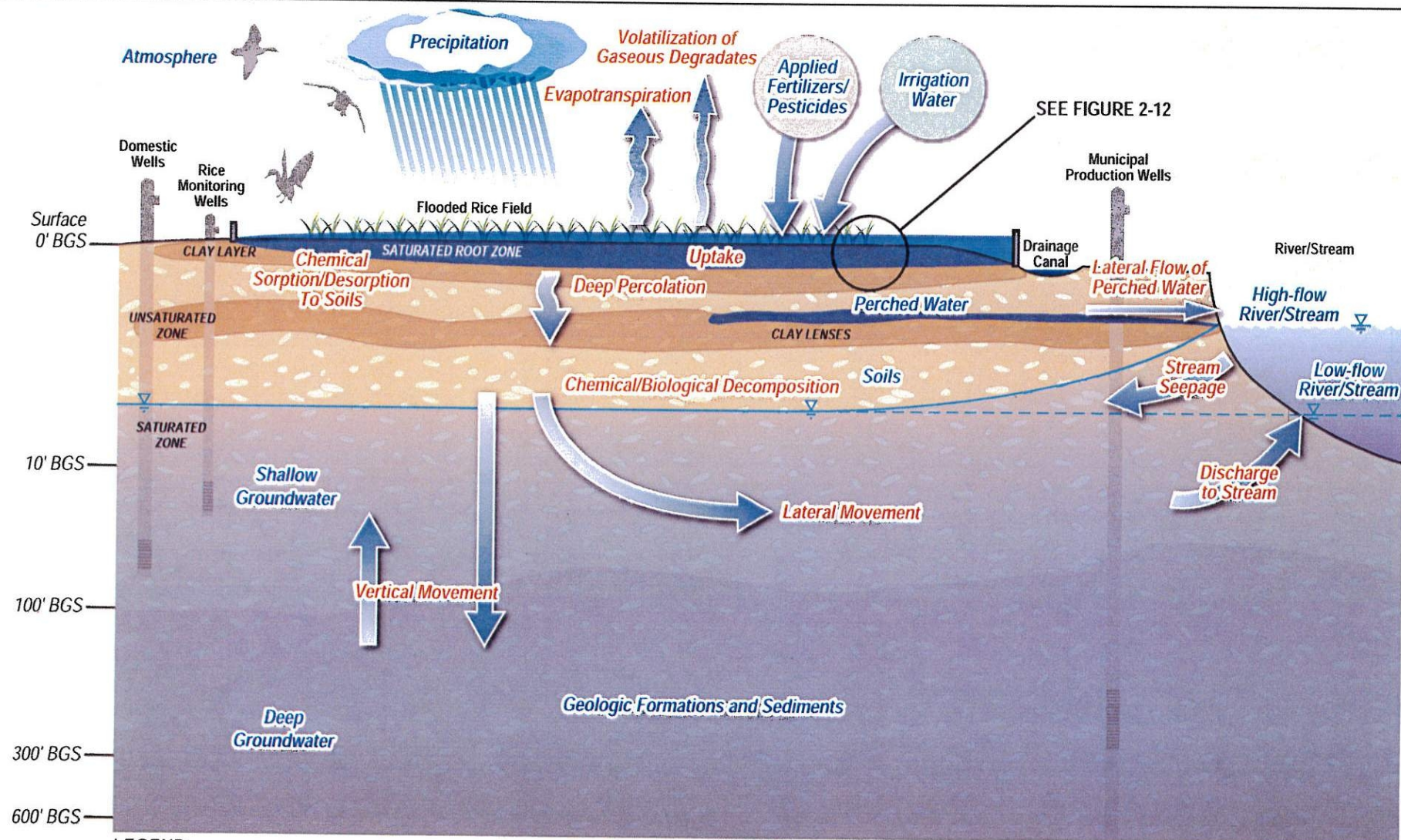


FIGURE 2-2
Conceptual Site Model in
Sacramento Valley Rice Fields
 Rice-Specific Groundwater Assessment Report

How do we measure nitrates past the root zone?



How to measure nitrates past the root zone?



Walnut tree
rooting depth



How to measure nitrates past the root zone?

