

Using anion exchange resin bags to estimate winter nitrate leaching in different processing tomato systems- E. Woodward, UC Davis

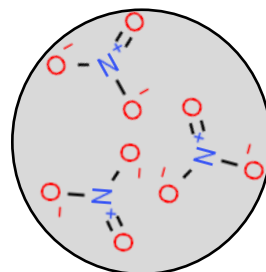


October 2018- We installed 10 bags, 65 cm deep, in each of the 12 plots (120 total bags). Bags were installed in undisturbed side of trench.



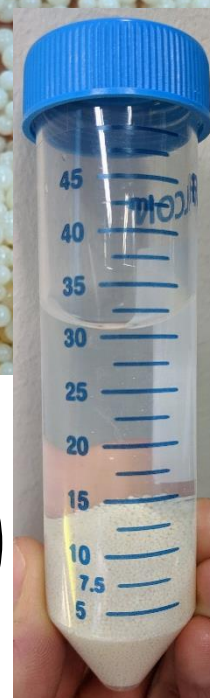
Bags were retrieved from each plot in March 2019

Anion exchange beads from each bag were extracted with 2 M KCl, and extracts were analyzed for nitrate (NO_3^-).



Systems Sampled	Fertilizer	Rotation	Crops
Alfalfa (Alf-Tom)	Chemical	6 yr	tom-corn-tom-alf-alf-alf
Conventional (Conv)	Chemical	2 yr	tom-corn
Mixed (Conv + WCC)	Chemical + WCC	2 yr	tom-corn
Organic (Org + WCC)	Compost + WCC	2 yr	tom-corn

WCC: winter cover crop; tom: tomato



During the 2018/2019 winter season, nitrate leaching was the lowest in the alfalfa system.

